

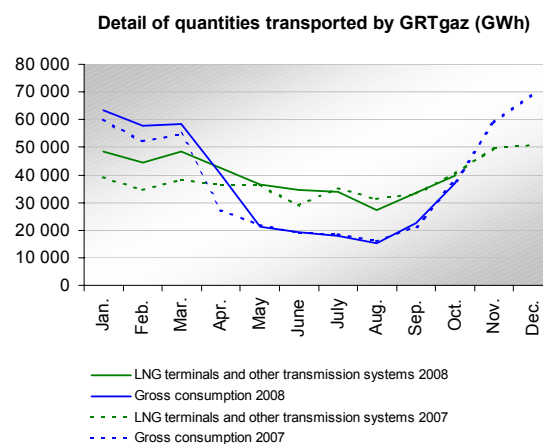
Quantities of natural gas transported in October 2008

TOTAL QUANTITIES TRANSPORTED BY GRTgaz

The quantities of natural gas transported by GRTgaz can be calculated:

- either as the sum of quantities entering the system (LNG terminals, other transmission systems, withdrawals from storage facilities);
- or as the sum of quantities leaving the system (other transmission systems, consumption, gas injected into storage facilities).

Entry quantities into GRTgaz's system				
Period	LNG terminals	Other transmission systems	Storage withdrawal	TOTAL
Oct. 2008	11.5 TWh	36.7 TWh	1.8 TWh	50.0 TWh
/ Oct. 2007	-8.2 %	-4.5 %	-33.6 %	-6.9 %
Nov. 07 to Oct. 08	139.1 TWh	466.3 TWh	83.1 TWh	688.5 TWh
/ Oct. 06 to Oct. 07	-7.9 %	+14.3 %	-4.7 %	+6.5 %
Exit quantities from GRTgaz's system				
Period	Other transmission systems	Consumption (1)	Storage injection	TOTAL
Oct. 2008	8.3 TWh	38.1 TWh	3.6 TWh	50.0 TWh
/ Oct. 2007	-20.8 %	-1.6 %	-26.4 %	-6.9 %
Nov. 07 to Oct. 08	115.5 TWh	485.1 TWh	87.9 TWh	688.5 TWh
/ Nov. 06 to Oct. 07	+1.0 %	+9.1 %	+0.5 %	+6.5 %



The quantities of natural gas transported by GRTgaz in October 2008 are down 6.9% on October 2007. as a result of a decrease in entries from LNG terminals, in injections and withdrawals into (from) storage facilities and in lower entry and exit quantities from (into) other transmission systems, together with lower consumption levels.

MAXIMUM AND MINIMUM DAILY FLOWS

Period	Quantities transported		Consumption		Entry quantities excl. withdrawal from storage facilities	
	Maximums	Minimums	Maximums	Minimums	Maximums	Minimums
Oct. 2008	2,178 GWh on Oct. 30	1319 GWh on 14 Oct.	1,892 GWh on Oct. 30	830 GWh on Oct. 12	1,957 GWh on Oct. 28	1,304 GWh on Oct. 17.
Nov. 2007 to Oct. 2008	3,280 GWh on Dec. 19, 2007	1,005 GWh on Aug. 13, 2008	2,890 GWh on Dec. 19, 2007	410 GWh on Aug. 10, 2008	2,141 GWh on Nov. 7, 2007	951 GWh on Aug. 19 2008
Absolute maximums	3,359 GWh on Feb. 28, 2005		2,991 GWh on Jan. 9, 2003		2,255 GWh on March 30, 2006	

¹ These are the quantities consumed by the large users connected directly to the GRTgaz system, by local distribution networks supplied by GRTgaz and by GRTgaz itself for its own needs, in particular to operate its compressor stations.

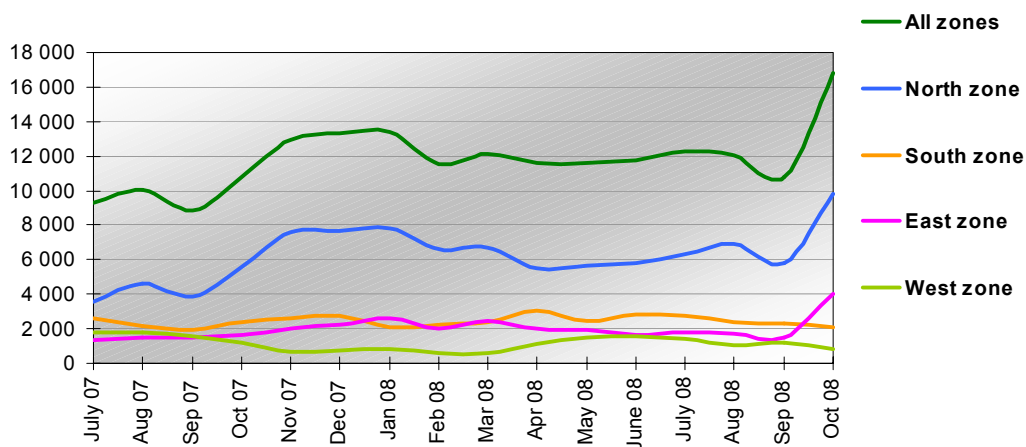
QUANTITIES TRADED ON THE WHOLESALE MARKET

Natural gas suppliers can buy or sell gas wholesale on gas title transfer points (PEGs).

In October 2008, the quantities of natural gas traded on the PEGs (16.750 GWh) were up 55% on October 2007 (10.800 GWh).

The month October is a typical period of contract renewals, which leads to a systematic increase in volumes traded, as reflected by the October 2007 and October 2008 figures.

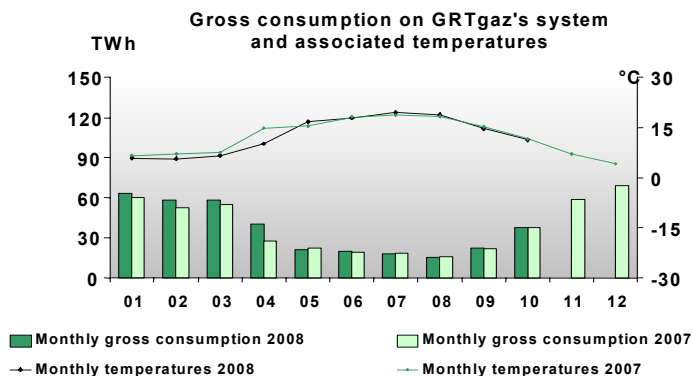
Quantities of natural gas traded on PEGs (GWh)



CONSUMPTION ON GRTgaz's SYSTEM

The figures below do not include the quantities of natural gas used by GRTgaz for its own needs.

Period	Consumption	Temperature
Oct. 2008	37.1 TWh	11.4°C
<i>Difference / Oct. 2007</i>	<i>-1.6%</i>	<i>-0.2°C</i>
Nov. 2007 to Oct. 2008	481.1 TWh	11.6°C
<i>Diff. / Nov. 2006 to Oct. 2007</i>	<i>+9.1%</i>	<i>-0.6°C</i>



Monthly consumption in October 2008 was very slightly down (-1.3%) on October 2007. the average temperatures recorded in October 2008 being fairly close to the October 2007 average, with a difference of -0.2°C.