

Quantities of natural gas transported in December 2009

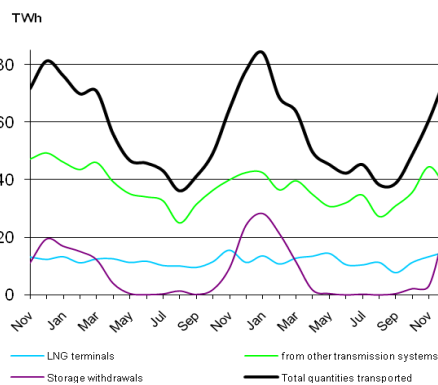
TOTAL QUANTITIES TRANSPORTED BY GRTGAZ

The quantities of natural gas transported by GRTgaz can be calculated:

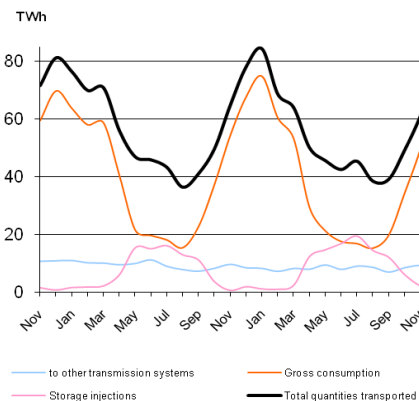
- either as the sum of quantities entering the system (LNG terminals, other transmission systems, withdrawals from storage facilities);
- or as the sum of quantities leaving the system (other transmission systems, consumption, gas injected into storage facilities).

Period	Entry quantities into GRTgaz's system			Exit quantities from GRTgaz's system			Total quantities transported
	LNG terminals	From other transmission systems	Storage withdrawal	To other transmission systems	Consumption (1)	Storage injections	
Dec. 2009 / Dec. 2008	14.7 TWh 31.6%	37.3 TWh -11.7%	23.7 TWh -2.2%	8.0 TWh -5.3%	67.6 TWh 0.0%	0.1 TWh n.s.	75.7 TWh -2.5%
Jan. 09 to Dec. 09 / Jan. 08 to Dec. 08	143.5 TWh 2.7%	424.7 TWh -5.6%	93.0 TWh 8.1%	99.3 TWh -11.4%	459.3 TWh -3.7%	102.5 TWh 16.2%	661.1 TWh -2.2%

Entries into GRTgaz's system



Exits from GRTgaz's system



The quantities of natural gas transported by GRTgaz in December 2009 were down 2.5 on December 2008. Compared with December 2008, consumption remained stable, entries from LNG terminals were on the increase, and there was a drop in the quantities withdrawn from storage facilities as well as in deliveries to adjacent transmission systems.

MAXIMUM AND MINIMUM DAILY FLOWS

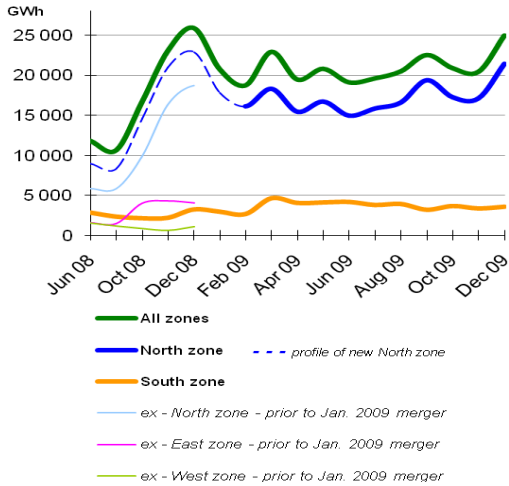
Period	Quantities transported		Consumption		Entry quantities excl. withdrawal from storage facilities	
	Maximums	Minimums	Maximums		Maximums	Minimums
Dec. 2009	3,076 GWh Dec 16	1,902 GWh Dec 6	2,847 GWh Dec 16	1,680 GWh Dec 6	1,736 GWh Dec 22	1,475 GWh Dec 30
Jan. 2009 to Dec. 2009	3,205 GWh Jan 07, 2009	999 GWh May 28, 2009	3,013 GWh Jan 07, 2009	404 GWh Aug 16, 2009	2,047 GWh Nov 17, 2009	962 GWh May 28, 2009
Absolute maximums	3,359 GWh Feb 28, 2005		3,013 GWh Jan 07, 2009		2,255 GWh Mar 30, 2006	

¹ These are the quantities consumed by the large users connected directly to the GRTgaz system, by local distribution networks supplied by GRTgaz and by GRTgaz itself for its own needs, in particular to operate its compressor stations.

QUANTITIES TRADED ON THE WHOLESALE MARKET

Natural gas suppliers can buy or sell gas wholesale on gas title transfer points (PEGs).

Quantities of natural gas traded on the PEGs



On January 1, 2009 a greater North zone was created as a result of the merger of the previous three zones (North, East, West).

In December 2009, the natural gas quantities traded on the PEGs (25,000 GWh) were down 4% on December 2008 (25,900 TWh).

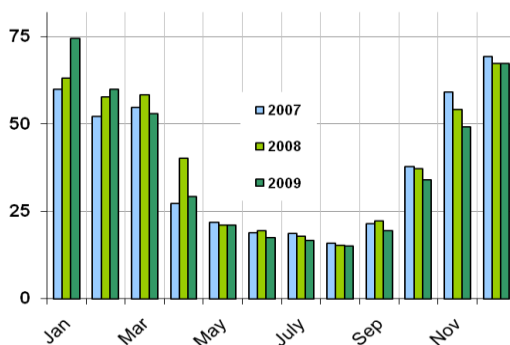
CONSUMPTION ON GRTGAZ'S SYSTEM

The figures below do not include the quantities of natural gas used by GRTgaz for its own needs.

Period	Consumption	Average Temperature
Dec. 2009	67.4 TWh	4.5 °C
<i>Diff. / Dec. 2008</i>	<i>0.0%</i>	<i>0.9 °C</i>
Jan. 2009 to Dec. 2009	456.8 TWh	12.0 °C
<i>Diff. / Jan. 2008 to Dec. 2008</i>	<i>-3.7%</i>	<i>0.4 °C</i>

Monthly gross consumption in December 2009 was stable compared with December 2008, whereas the monthly average temperature in December 2009 (4.5°C) was higher by 0.9°C than in December 2008 (3.6°C), although below the reference average temperature for the month of December (5.3°C).

Gross monthly consumption on GRTgaz's transmission system



Monthly average temperatures

